

QUANTUM EVOLVE

As we continue to explore the vast frontier of cyberspace, we must be vigilant in our efforts to manage cyber risks.

In many ways, the challenges we face are not unlike those encountered by the crew of the Starship Enterprise as they ventured into uncharted territories.

Just as the Enterprise had to constantly scan for potential threats from hostile alien species, we must be on the lookout for cyber attackers who seek to exploit vulnerabilities in our systems.

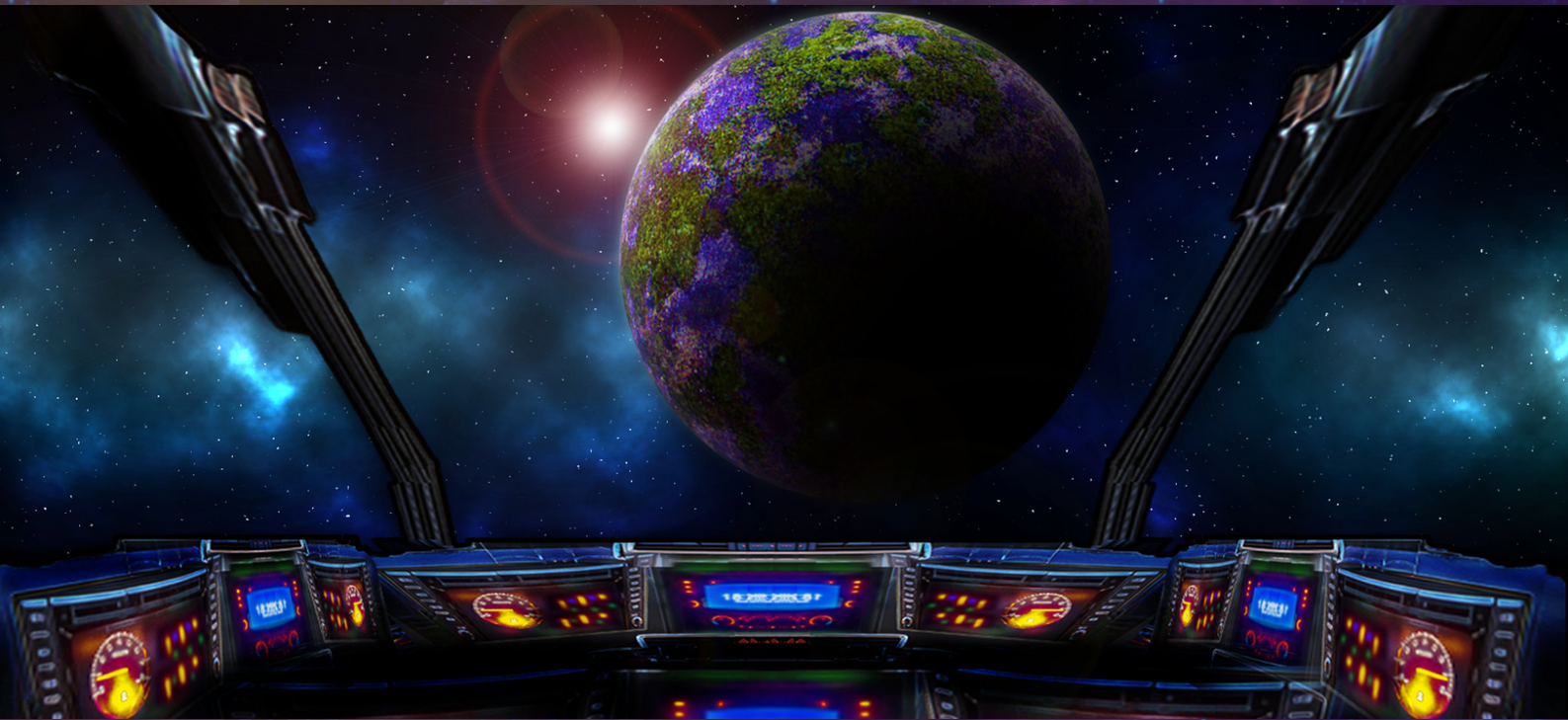
We must also ensure that our defences are robust enough to withstand any attacks that may come our way.



QUANTUM EVOLVE

To effectively manage cyber risks, we must take a multi-layered approach, much like the Enterprise's shields which could be adjusted to withstand different types of energy weapons.

This includes implementing strong access controls, regularly updating and patching our systems, and educating our users on best practices for staying safe online.



We must also be prepared for the worst-case scenario – the Enterprise crew had emergency protocols in place for a variety of situations.

This means having a plan in place for responding to cyber incidents, including how to isolate affected systems, contain the damage, and recover as quickly as possible.

QUANTUM EVOLVE

Preparation for worst-case or no-win scenarios begin early in the world of Star Trek.

In "Star Trek II: The Wrath of Khan", Starfleet Academy cadets were put through their paces and tested in a bridge simulator exercise to rescue the civilian spaceship Kobayashi Maru, which was damaged and stranded in dangerous territory.

The cadets lose contact with the civilian ship and three Klingon vessels attack. With the bridge crew dead and the ship badly damaged, Lieutenant Saavik orders the crew to abandon ship and the simulation ends.

Feeling defeated, Lieutenant Saavik classed the simulation as unfair because there is no way to win. Admiral James T. Kirk replies that a starship captain might face an actual "no-win scenario".

Does this mean that the Enterprise's defences weren't robust enough to defend against the Klingons' (the hostile alien species) attack?

Kirk reveals later in the film that he beat the Kobayashi Maru as a cadet on his third attempt by reprogramming the simulation to make it possible to rescue the ship.

QUANTUM EVOLVE

Like James T. Kirk, Quantum Evolve doesn't actually believe in the idea of a no-win situation. Our pioneering cybersecurity posture and protection solutions can prepare you for, and help you defend against, cyber-attacks.

As we boldly go where no one has gone before in the realm of cyberspace, let us do so with the knowledge that we are prepared for whatever challenges may come our way.

Together, we can protect our digital assets and ensure that our mission to explore new frontiers continues unimpeded.

